

Payroll Security

Why is everyone trying to hack me!?



What does a thief look like?





What do modern thieves look like?





They almost always look like friends.

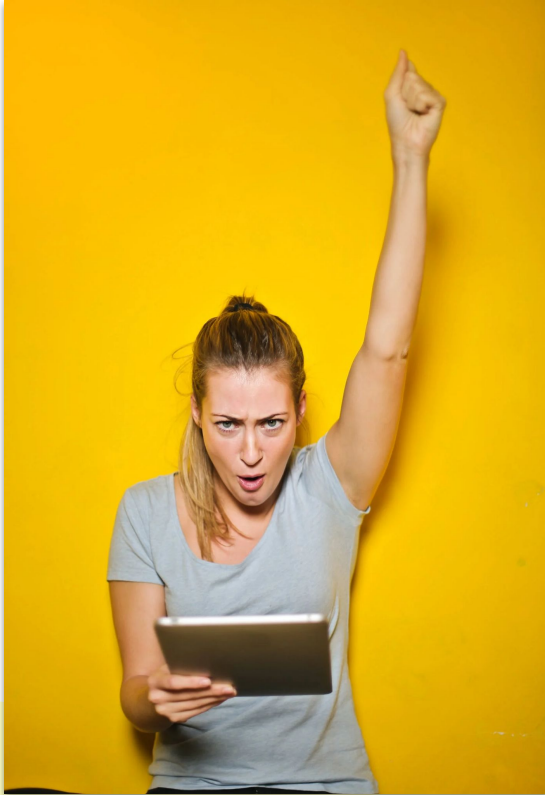


For years, attackers tried to

- Backdoor into your server
- Get access to your network
- Implant malware on your computer
- Or in some other way, get access to a system.



The GOOD news is that



we stopped them!



The BAD news is that



we stopped them.



What does this mean?

Bad guys are having a harder and harder time attacking our systems.

Google and Microsoft have helped.

Cloud technologies have helped.

Better password management has helped.

SO...



Attackers now target YOU

- Attackers look for vulnerable parts of systems
- Technology used to be much more vulnerable
- People are inherently trusting
- Attackers are targeting people, instead of the technology itself.



Still common...



Phishing - less effective than before

- General phishing attacks are still prevalent
- You likely receive several “spam” and suspicious phishing emails every week
- Your email client *probably* filters most (if not all) of these



More common...



Spear Phishing - getting BIG

- Spear phishing is targeted
- Spear phishing is researched
- Spear phishing is personal
- Spear phishing preys on humanity

And finally, Moby Dick



YOU are the big fish

Whaling (or Whale Phishing)

Spear phishing with focused intent

Targets the \$\$




How are the bad guys so effective?



Schools are transparent!

Information current as of: 02/17/2023



Directory of Montana Schools

OFFICE OF PUBLIC INSTRUCTION
ELSIE AMTZEN, STATE SUPERINTENDENT

Welcome to the **Directory of Montana Schools**. This directory provides contact information for Montana's School Districts, Schools and staff such as Principals, Superintendents and others.

The directory listings are by county in alphabetical order. You can easily search the directory by using the search function of your PDF software. For most software, pressing ctrl or command + F will bring up the search function.

If you intend to print this document, please note it is approximately 300+ pages long! If you need the directory information for just a single county, we strongly recommend going [here](#) for the most up-to-date and accurate information.

The Directory of Montana Schools is produced by the Montana Office of Public Instruction, Elsie Amtzen, Superintendent.

Questions and concerns regarding this publication should be directed to:

P.O. Box 202501 Helena, Montana 59620-2501
(406) 444-3680
OPISupt@mt.gov



07 Cascade County

County Supt: Diane Heikkila Phone:454-6855 E-mail: dheikkila@cascadecountymt.gov

Sun River Valley Pub Schls (SS:1067)

Box 380

Simms, MT 59477

		Phone/Extension	Fax
District Supt: Dave Marzolf		264-5110 775	264-5189
E-mail: dmarzolf@srvs.k12.mt.us			
District Clerk: Belinda Klick		264-5110 122	264-5189
E-mail: bklick@srvs.k12.mt.us			
Board Chairperson: Kennard Steinke		264-5429	264-5189
E-mail: amerifence@3rivers.net			
Simms H S (LE: 0118)	123 Walker Street		
District No. F	Simms, MT 59477		
		Phone/Ext	FAX
		264-5110	264-5189
			Grades Served
			9-12
<i>Simms High School (SC: 0174)</i>			
Principal LUKE MCKINLEY	123 Walker Street		
E-mail: lmckinley@srvs.k12.mt.us			
Sun River Valley Elem (LE: 1225)	123 Walker Street		
District No. 55	Simms, MT 59477		
		Phone/Ext	FAX
		264-5104	264-5265
			Grades Served
			PK-8
<i>Cascade Colony School (SC: 1657)</i>			
Principal HOLLY KINCAID	508 Birdtail Road		
E-mail: hkincaid@srvs.k12.mt.us			
<i>Fort Shaw Elem School (SC: 0173)</i>			
Principal HOLLY KINCAID	School Loop Road	264-5110	264-5146
E-mail: hkincaid@srvs.k12.mt.us			PK-5
<i>Sun River Middle School (SC: 1538)</i>			
Principal LUKE MCKINLEY	123 Walker Street	264-5110	264-5189
E-mail: lmckinley@srvs.k12.mt.us			6-8



07 Cascade County

County Supt: Diane Heikkila Phone:454-6855 E-mail: dheikkila@cascadecountymt.gov

Sun River Valley Pub Schls (SS:1067)
Box 380
Simms, MT 59477

District Supt: Dave Marzolf	Phone/Extension	Fax
E-mail: dmarzolf@srvs.k12.mt.us	264-5110 775	264-5189
District Clerk: Belinda Klick	264-5110 122	264-5189
E-mail: bklick@srvs.k12.mt.us		
Board Chairperson: Kennard Steinke	264-5429	264-5189
E-mail: amerifence@3rivers.net		



		Phone/Ext	FAX	Grades Served
Simms H S (LE: 0118) District No. F	123 Walker Street Simms, MT 59477			
<i>Simms High School (SC: 0174)</i> Principal LUKE MCKINLEY E-mail: lmckinley@srvs.k12.mt.us	123 Walker Street	264-5110	264-5189	9-12
Sun River Valley Elem (LE: 1225) District No. 55	123 Walker Street Simms, MT 59477			
<i>Cascade Colony School (SC: 1657)</i> Principal HOLLY KINCAID E-mail: hkincaid@srvs.k12.mt.us	508 Birdtail Road	264-5104	264-5265	PK-8
<i>Fort Shaw Elem School (SC: 0173)</i> Principal HOLLY KINCAID E-mail: hkincaid@srvs.k12.mt.us	School Loop Road	264-5110	264-5146	PK-5
<i>Sun River Middle School (SC: 1538)</i> Principal LUKE MCKINLEY E-mail: lmckinley@srvs.k12.mt.us	123 Walker Street	264-5110	264-5189	6-8



Welcome to 2023 and the second semester! March 23rd is the end of the third

Login ▾

Translate ▾



Sun River Valley School District *55F*

[About](#) [School Board](#) [Parents & Community](#) [Contact](#) [Educational Support](#) [Clubs & Activities](#)

About Us

Administration:

Superintendent (6-12): Dave Marzolf

Principal (6-12): Luke McKinley

Business Manager (6-12): Belinda Klick

Principal (K-5): Shianne Currey



March 23rd is the end of the third quarter! Keep up the good work!

Login ▾

Translate ▾



Sun River Valley
School District 55F

[About](#) [School Board](#) [Parents & Community](#) [Contact](#) [Educational Support](#) [Clubs & Activities](#)

Staff

Search:

ADMINISTRATION



Mr. David Marzolf
Superintendent/Transportation
Director



Mr. Luke McKinley
6-12 Principal/AD



Ms. Holly Kincaid
FSE Principal



STAFF



Mrs. Becky Hart
IT



Mrs. Belinda Klick
Clerk/Business Manger



Mrs. Teri Nelson
Secretary



Mrs. Jennifer Rohrer
Business Teacher
Business Education

Privilege Escalation

Districts provide all of the information required for a type of attack we call Escalation Attacks - these are becoming more prevalent!



Recent attacks

Escalation attacks are now common

Payroll attacks on the rise

Direct deposit schemes newest menace



Attacks are getting AWESOME

- The “From” email can be spoofed and look trusted
- Attacker’s language and spelling are getting nearly perfect
- Sometimes the attack really DOES come from within!



Anybody see this one?

MONTANA STANDARD

Subscribe
\$1 for 6 months

E-Edition News Obituaries Opinion Sports Entertainment Lifestyles Jobs Wildfires 33° Cloudy Log In

EDITOR'S PICK ALERT TOP STORY

Butte School District switches to checks-only policy for paying vendors

Kasey Faur Feb 19, 2023 0

1 of 3



And you probably saw this one...

Hello (yourname),

I have recently changed banks, can you update my payroll direct deposit information? Previous account on record will be inactive before my next payment day.

Regards,

(a real teacher)



Understand the blackmarket...



Throw seeds

(look for a target)



Cultivate

(nurture a target)



Harvest

(reap the final payout)

From the Butte attack...

*“The email actually came from a cyber thief using **detailed information** illegally obtained from an **unknown source**, Jonart said. When school officials learned of the theft, the FBI, along with Homeland Security were notified.”*

*“Jonart said it’s still **not clear how the thief accessed the information** used to pull off the fraud, as a forensic investigator found the school district’s accounts weren’t subject to unauthorized access that would’ve led to the fraudulent wire transfer.”*

- © Montana Standard, Feb 19, 2023 - Kasey Faur



HOW do I defend my district?

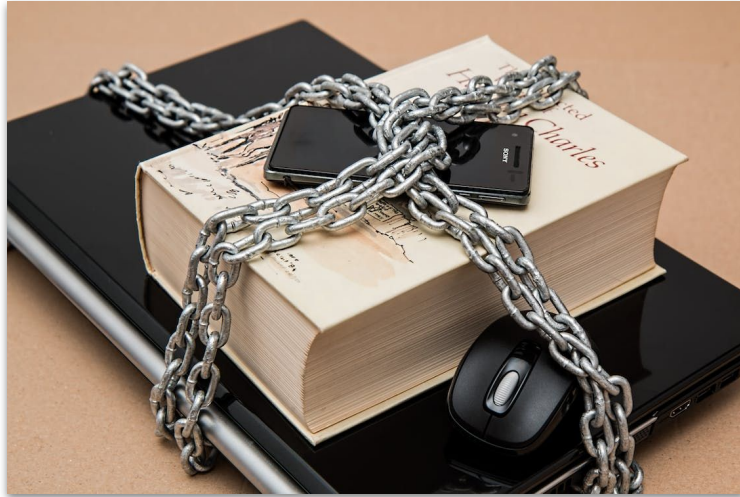


TAKE CONTROLS

- Don't assume (remember what it makes!)
- Adopt procedures that protect everyone
- Get real signatures on internal \$\$ changes
- Verify, Verify, Verify! YOU call THEM
- Don't be concerned with looking foolish!



Can technology help keep me safe?



...kinda...

But remember,
they attack *you* because
tech is already so good!

Changes to TECH / PROCEDURE

- Have your techs enable 2fa (at least for administration)
- Adjust policies to require signed paperwork for all employee banking
- Require POs for all suspicious/new vendors
- Be CAREFUL with direct deposits



Pause & Think Online

Use your:

Head

Heart

Arms

Gut

Legs



YOU are the best defense!



Questions? Want a hand?

Jeff Patterson - jeffp@k12mt.com

K12 Montana - k12mt.com

We work across the state helping schools with a variety of projects and opportunities!



Acronis

AUTHORIZED
RESELLER

Panel
k12panel.com

