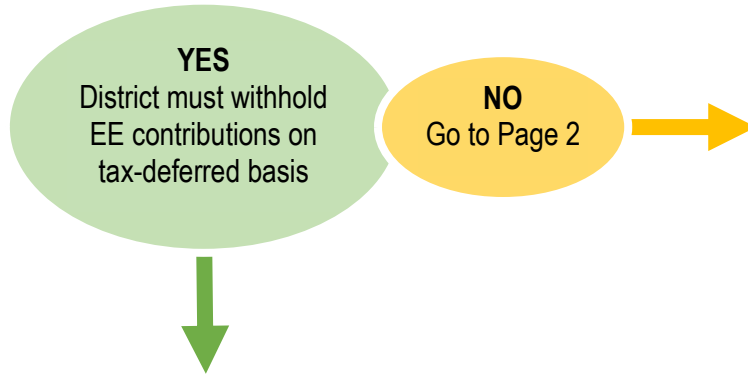
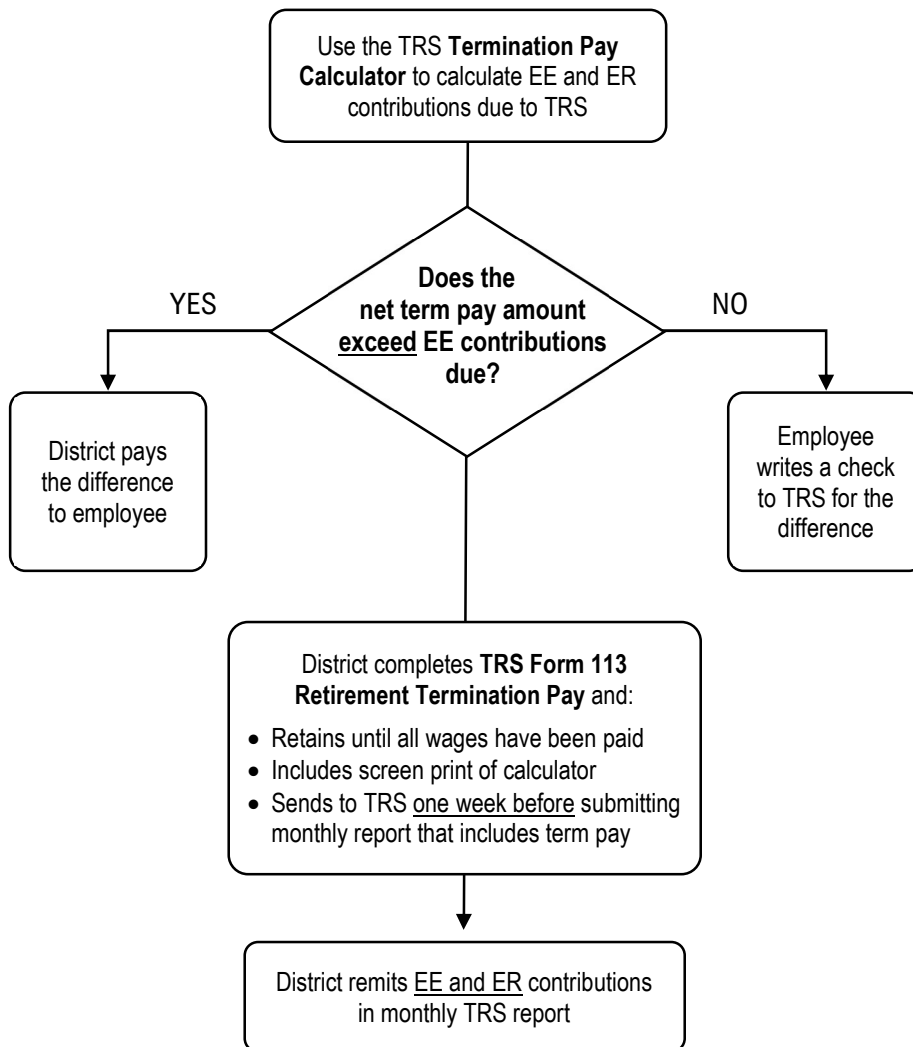


TRS RETIREMENT – Termination Pay procedures

Did the employee sign TRS Form 129 *Termination Pay Irrevocable Election* (TPIEF) at least 90 calendar days prior to their last day of work?



When the final termination pay amount is known:



Follow this procedure when TRS Form 129 was **not** completed in time for tax deferral of EE contributions

When the final termination pay amount is known:

